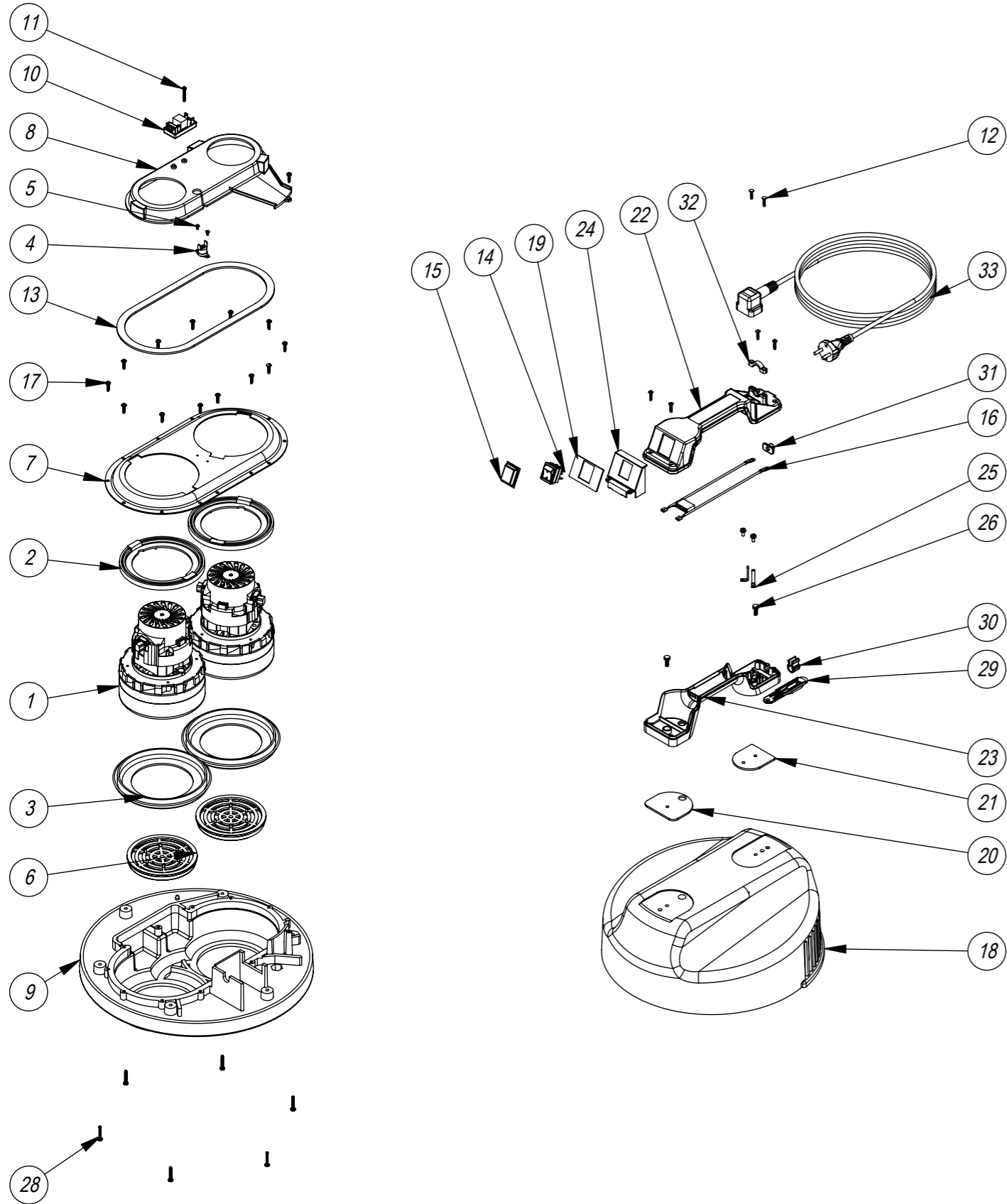


Numatic International Spare Parts

Model No: HEAD STYLE 39 (WVD) EXPLODED DRAWING

Internal Code: N/A
 DRAWING: DRW-24329 ISS:A07
 PRO 09/02/2018

NB: FOR WIRING SEE DRAWING: WD-0???



Numatic International Spare Parts

Model No: HEAD STYLE 39 (WVD) EXPLODED DRAWING

ITEM NO.	PART NUMBER	DESCRIPTION	QTY.	COMMENTS:
1	205411	240V 2 STAGE D.I BYPASS ACUSTEK MOTOR (BL21104)(MARKED 230V)	2	
2	227925	TOP MOTOR GASKET	2	
3	202005	MOTOR BOTTOM GASKET	2	
4	220532	THERMOSTAT	1	
5	219491	M3 X 5MM LONG POZI PAN TAPTITE SCREW	2	
6	206010	FAN GUARD	2	
7	225168	TOP MOTOR HOUSING	1	
8	227928	570 AIR SEPERATOR (LAMB BYPASS MOTOR DUPLEX)	1	
9	301048	PROCESSED BOTTOM MOTOR HOUSING	1	
10	905647	DELAY RL PCB [PCB-1336]	1	
11	219602	No6 X 1 INCH LONG POZI PAN PLASTITE SCREW (Z/PL)	1	
12	219107	NO6.5/8 INCH LG.POZI-PAN.SCREW.Z/PL.PLASTITE	6	
13	202012	GASKET	1	
14	220843	BLUE ROCKER SWITCH	1	
15	206573	SWITCH COVER (PLUG HANDLE)	1	
16	230151	220V DUPLEX SUPPRESSOR ASSY AMETEK MOTOR	1	
17	219370	No8 X 5/8 INCH LONG PLASTITE STAINLESS STEEL SCREW	14	
18	227043	COVER MOULDING DOUBLE GRILL WITH INSERTS	1	
19	208706	SINGLE SWITCH HANDLE SEALING GASKET	1	
20	904660	HANDLE GASKET (LARGE)	1	
21	904666	HANDLE GASKET (SMALL)	1	
22	904814	HANDLE COVER 1-SWITCH 2 POLE 16A	1	
23	904996	HANDLE BASE 2 INSERTS	1	
24	227635	SWITCH MOUNTING BRACKET (1 SWITCH)	1	
25	206562	CONTACT PIN	2	
26	219045	M5 X 16MM LONG POZI PAN SEMS SCREW	2	
27	291151	M4 X 10MM LONG T20 SEMS SCREW Z/PL - PRODUCT CODE 8.8 - TX20 HEAD	2	
28	219369	No8 X 1 INCH LONG POZI PAN STAINLESS STEEL PLASTITE SCREW	6	
29	227636	STRAIN RELIEF	1	
30	227637	CABLE CLIP	1	
31	904790	HANDLE REAR SEAL	1	
32	216290	CABLE CLAMP	1	
33	N/A	PLUGGED CABLE	1	CONTACT NUMATIC FOR DETAILS